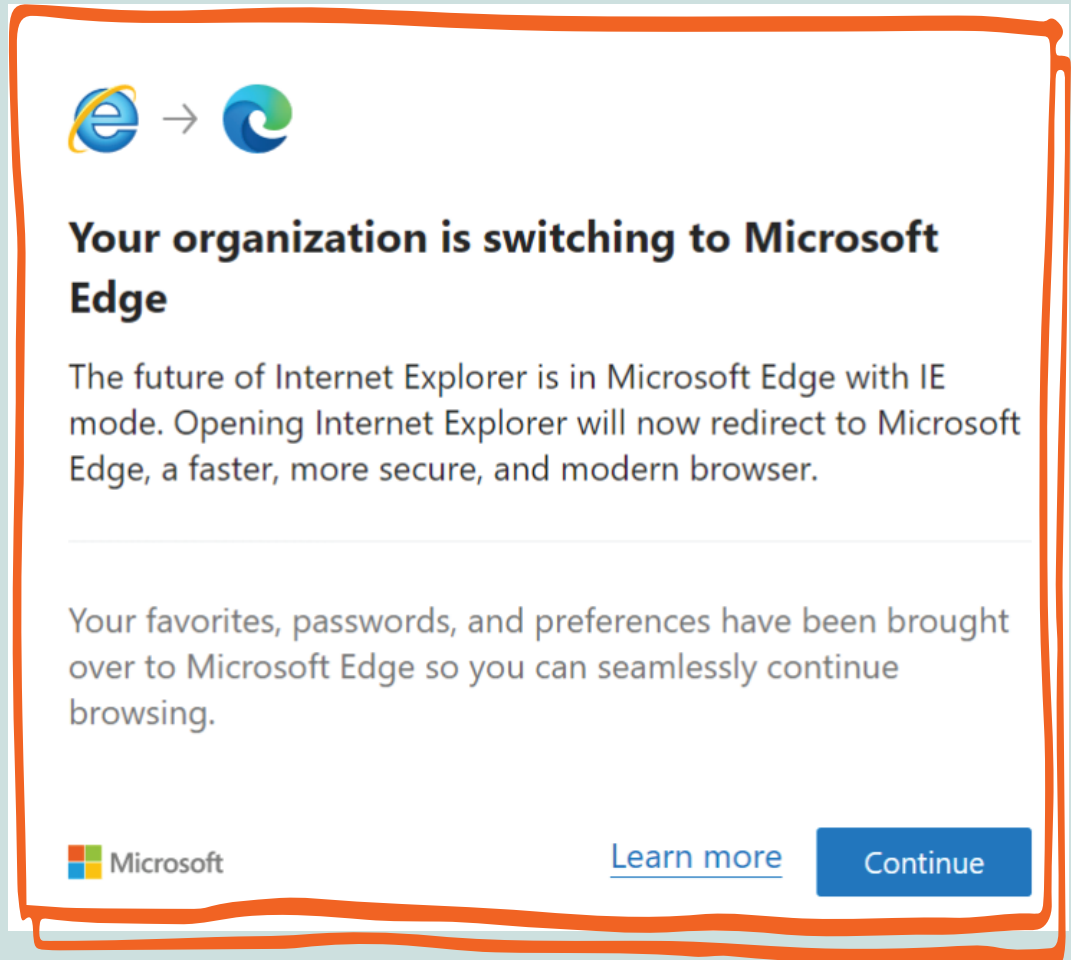


In order to continue using the Ria system if this message show up...

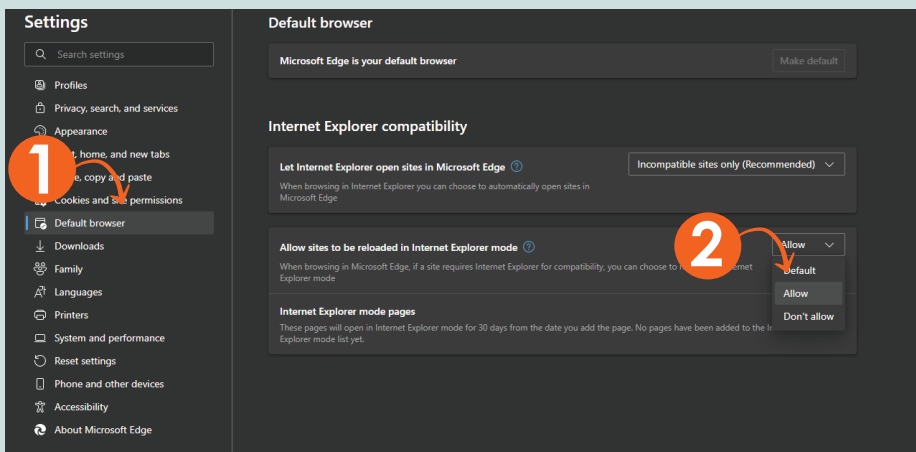
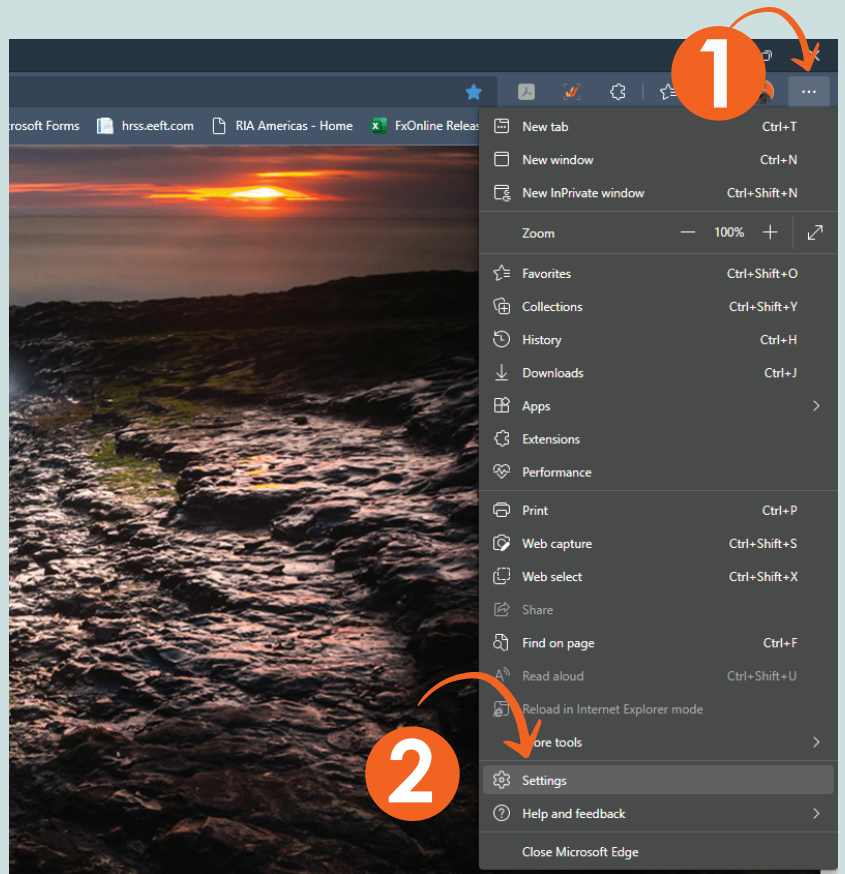


you must complete the following steps...



# STEP 1

Open Microsoft Edge, click the three dots "... " icon and go to Settings



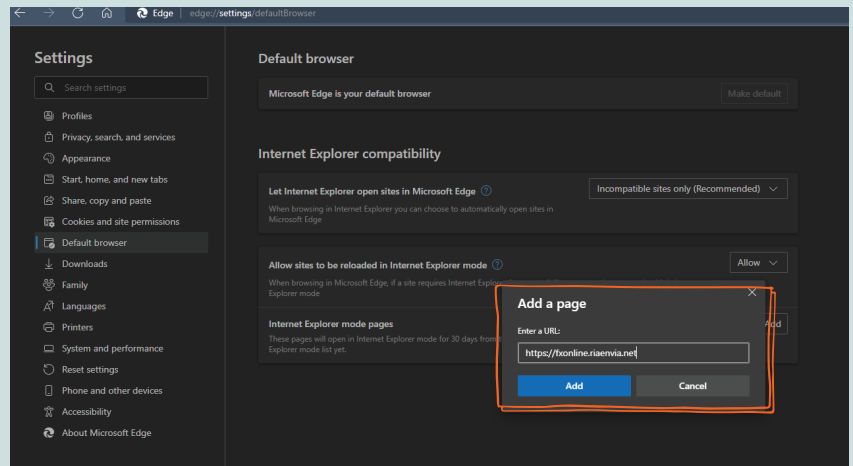
# STEP 2

Go to "Default Browser" > and select the option "Allow"

# STEP 3

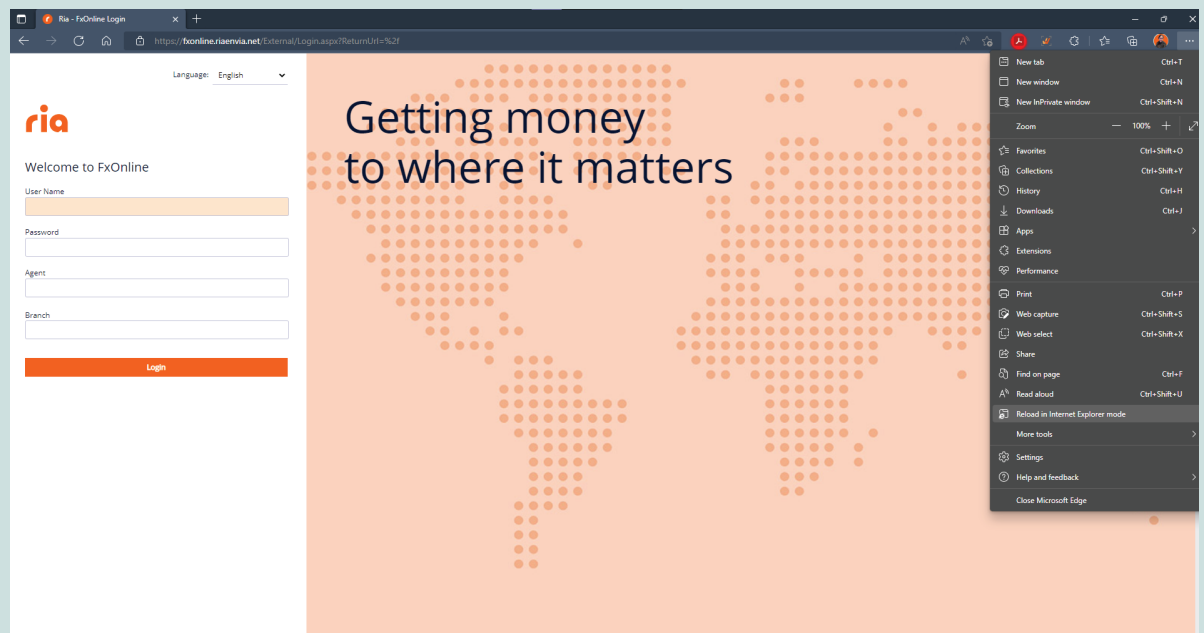
Click on the "Add" button > Type in the URL

"https://fxonline.riaenvia.net" and click ADD.

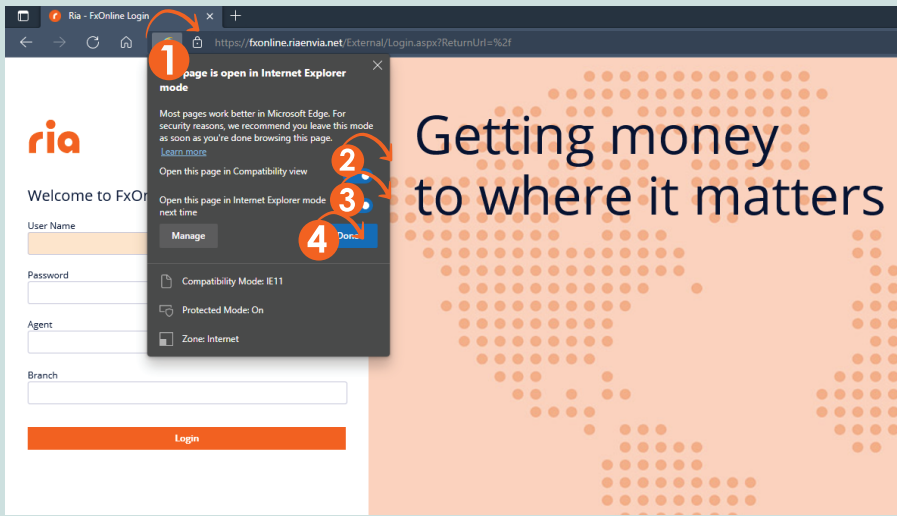


# STEP 4

Open the Ria system in Microsoft Edge > Click on three dots "..." and go to "Reload in Internet Explorer mode".



# STEP 5



**Click on the Internet Explorer Mode icon. Select the options**

**"Open this page in:"**

**"...compatibility mode"**

**"...Internet Explorer mode next time"**